

Mayor
Judy Chartrand

**Interim City
Administrator**
Melissa Glenna



Council Members
Linda Merkel
Brian Norelius
David Waldoch
Greg Krueger

13292 Sylvan Ave • Lindström, Minnesota 55045
(651) 257-0620 • Fax: (651) 257-0623

IRENE AVE. PAVEMENT IMPROVEMENTS PROJECT UPDATE

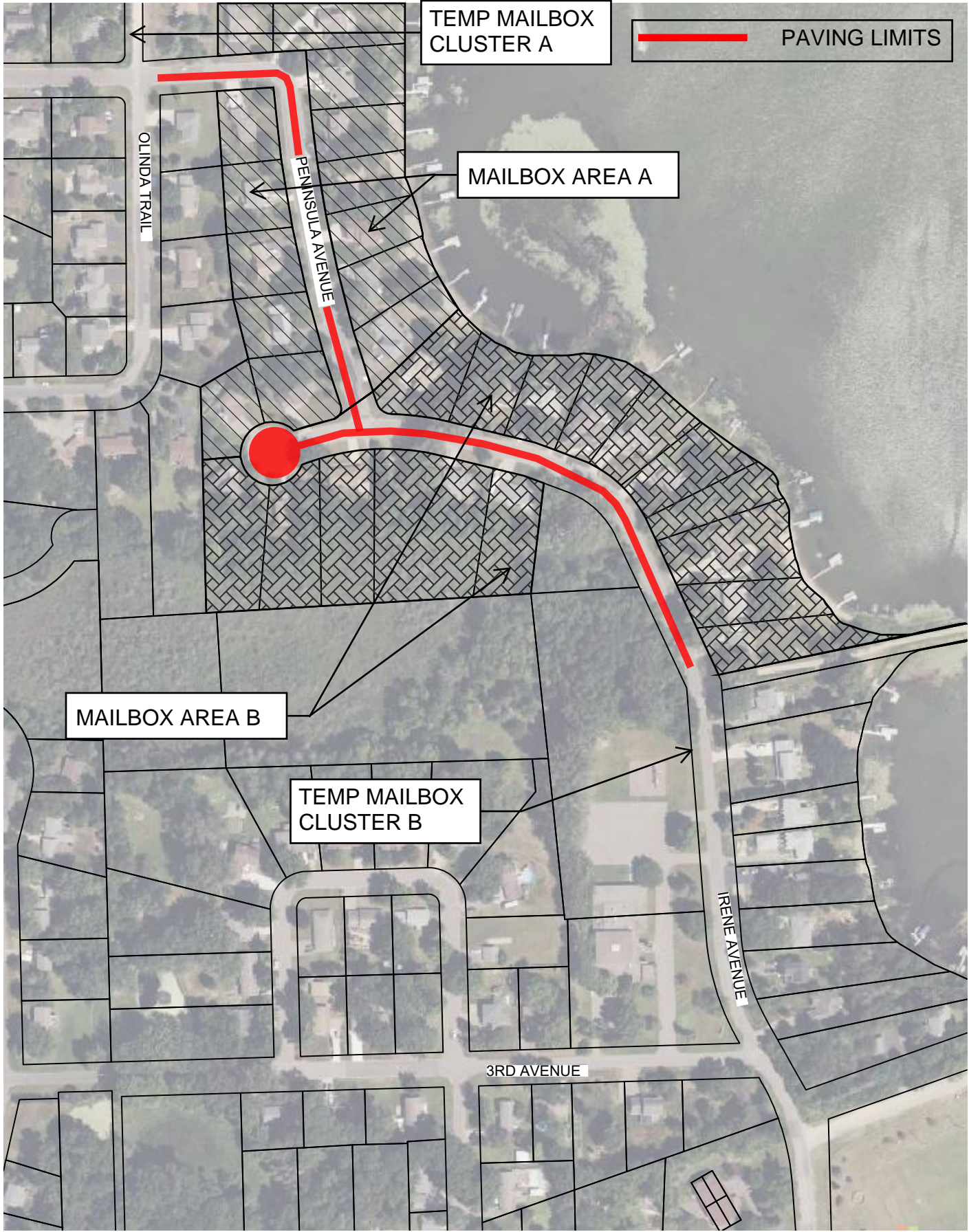
Gustafson Excavating has completed the storm sewer and curb replacement on Irene Avenue. The next phase of the project will include replacing deteriorated curbing, reclaiming the existing pavement surface and repaving on Irene Avenue, Irene Court, and Peninsula Avenue (see project location map on reverse side of this notice). Pavement reclaiming is a process that involves grinding up the existing pavement and blending it with the underlying aggregate to form a durable gravel base to construct the new pavement upon.

City Staff and the paving contractor, Bituminous Roadways, recently held a pre-construction meeting to discuss the project schedule. Curb replacement work is anticipated to begin on July 10th. When curb replacement work is required within a driveway, Staff will notify residents with a door hanger at least 24 hours prior to curb removal. Property owners must have any vehicles out of their driveway by 7:00 am the morning the curb is scheduled to be removed/replaced. In order for the curb to properly cure, property owners may not drive over the newly placed curb for a period of seven (7) days. You may park on the street near your property, but please avoid parking next to a curb painted for removal.

The contractor will be removing the pavement and begin grading the week of July 19th. Paving is tentatively scheduled to begin the week of July 24th. Please keep in mind that the schedule is subject to change. While the contractor is removing pavement, grading, and paving, we ask that all vehicles are out of the driveways by 7:00 am each morning and daily trips are limited to greatest extent possible. The City will have a construction representative onsite during these operations to assist with guiding the residents safely through the construction site.

In order to maintain uninterrupted mail service to the project area, the contractor will be setting up two (2) temporary mailbox clusters. Please refer to the reverse side of this notice for mailbox cluster locations. The day before the temporary mailbox cluster will be implemented, you will receive a notice in your mail. For garbage and recycling services, the contractor will work with the local haulers to determine a safe accessible location on the job site to store receptacles prior to pick-up. The evening before your scheduled pick day, please place your receptacles at the end of your driveway and clearly mark your address on each receptacle. The contractor will transport your receptacles to the coordinated pick-up location and return them to your driveway at the end of the day.

We understand the inconveniences this construction project may have on adjacent residents and we appreciate your patience and understanding. If you have any questions or concerns, please contact our City Engineer, Jon Herdegen, directly at 612-548-3124 | jherdegen@msa-ps.com or our Construction Representative, Kevin Burns at 61-271-6584 | kburns@msa-ps.com. Thank you for your continued cooperation while we complete this important project.



TEMP MAILBOX CLUSTER A

PAVING LIMITS

MAILBOX AREA A

MAILBOX AREA B

TEMP MAILBOX CLUSTER B

IRENE AVENUE

3RD AVENUE

OLINDA TRAIL